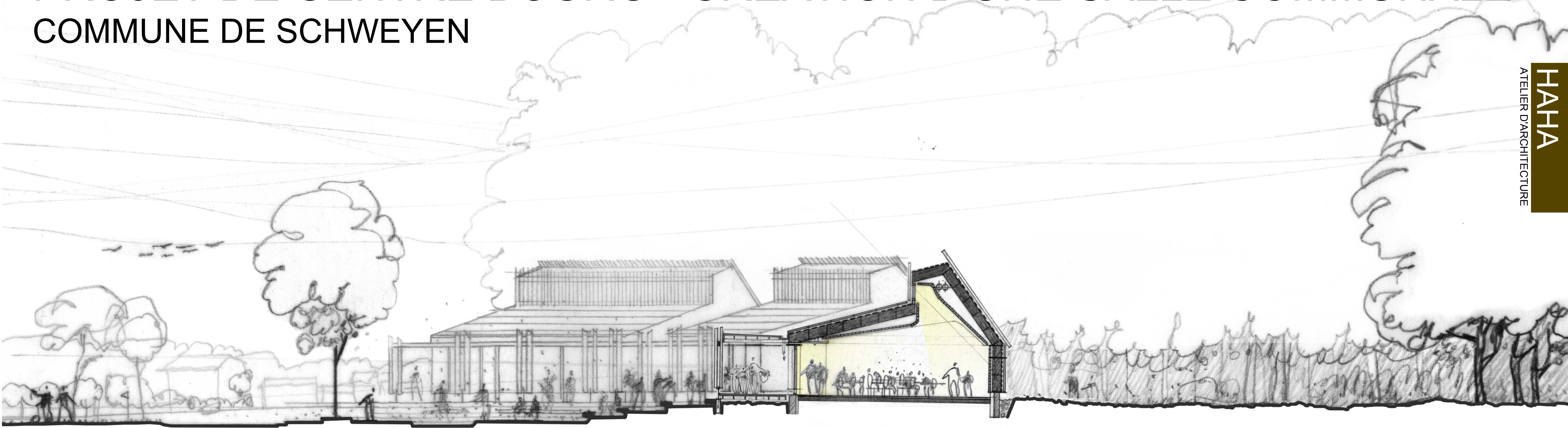
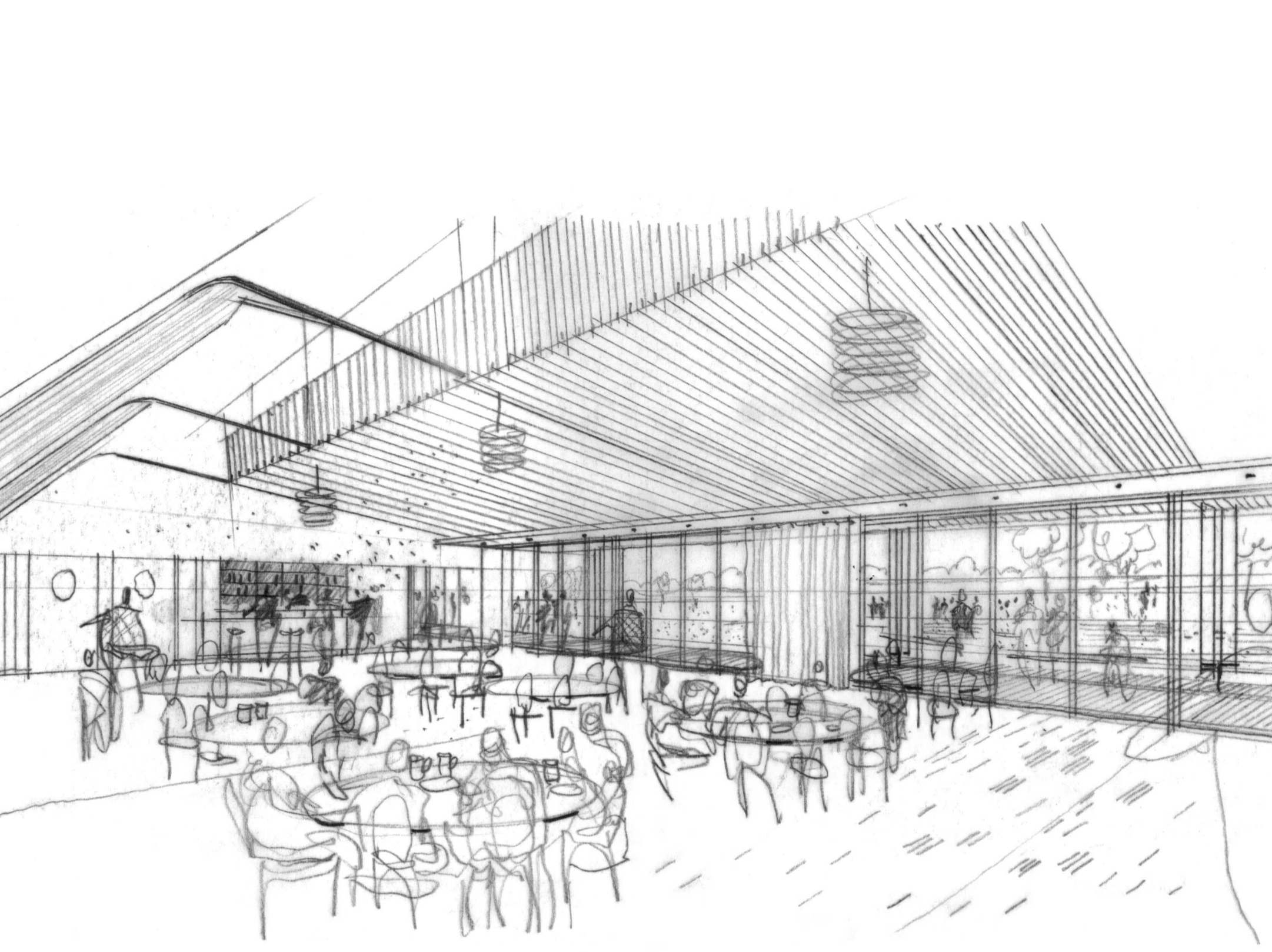


PROJET DE CENTRE BOURG - CREATION D'UNE SALLE COMMUNALE

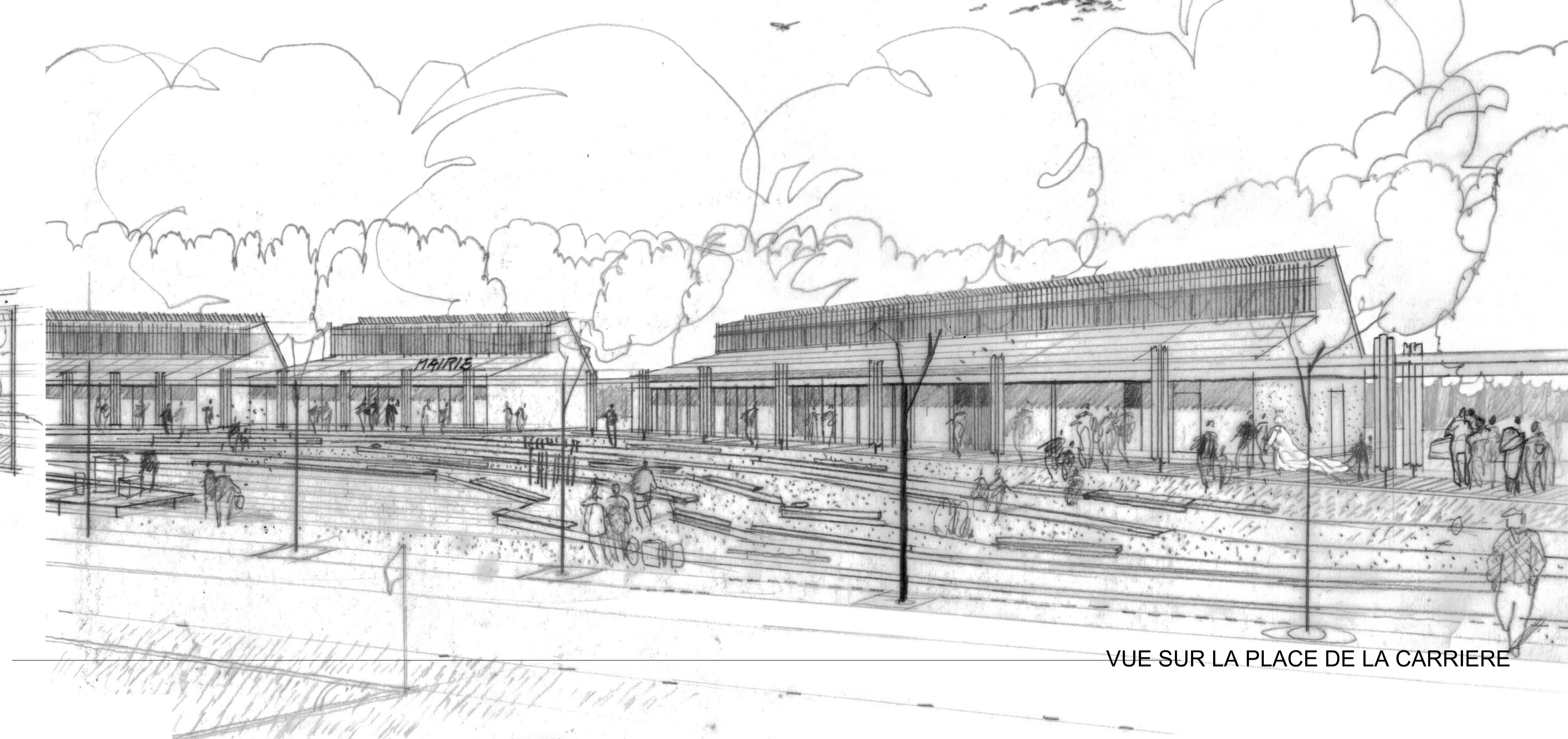
COMMUNE DE SCHWEYEN



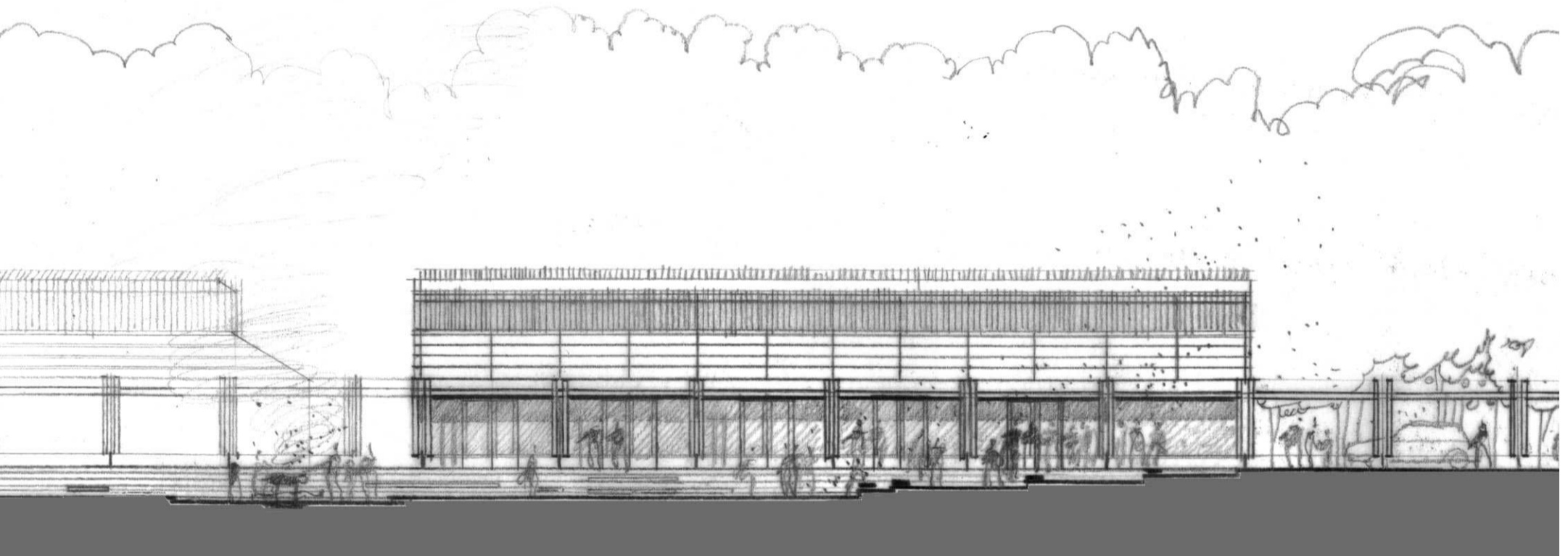
COUPE PAYSAGERE - ECH : 1/100°



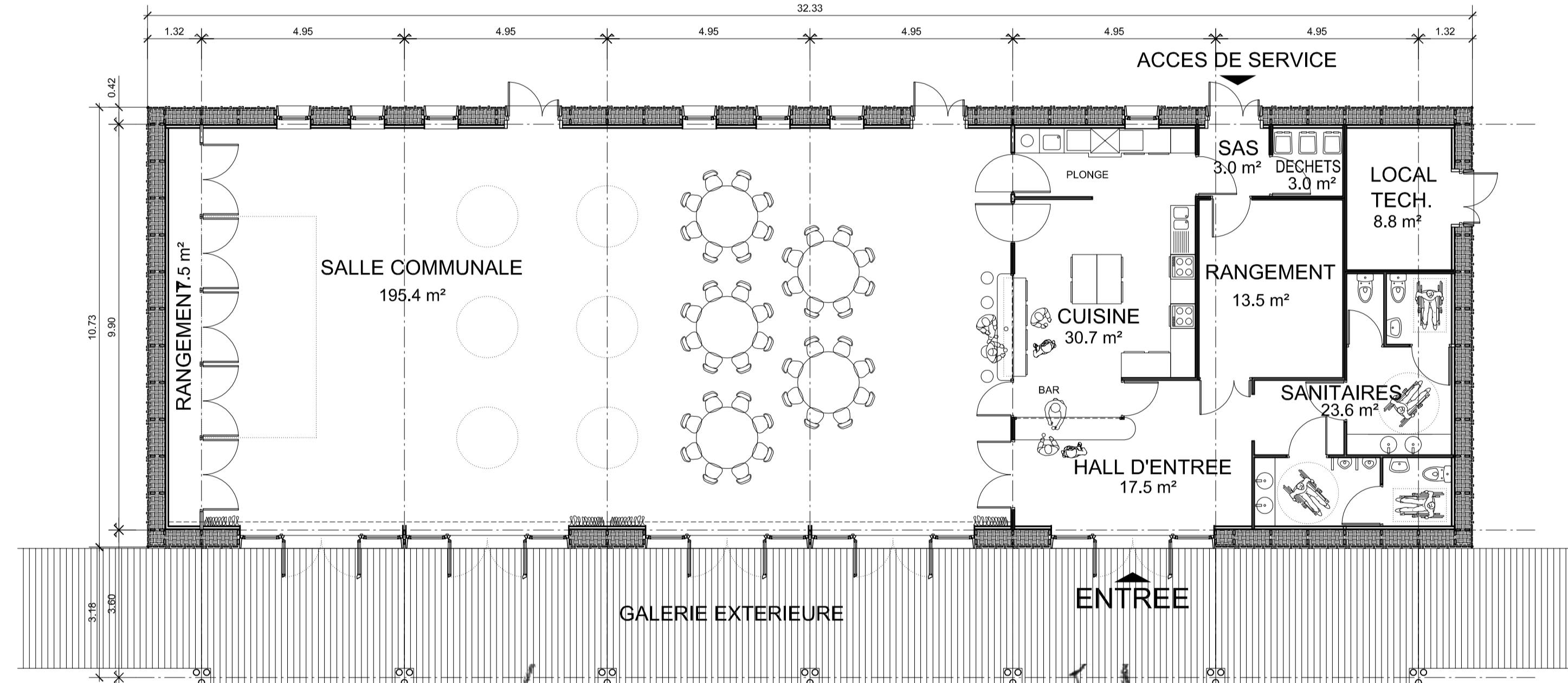
VUE SUR LA SALLE COMMUNALE



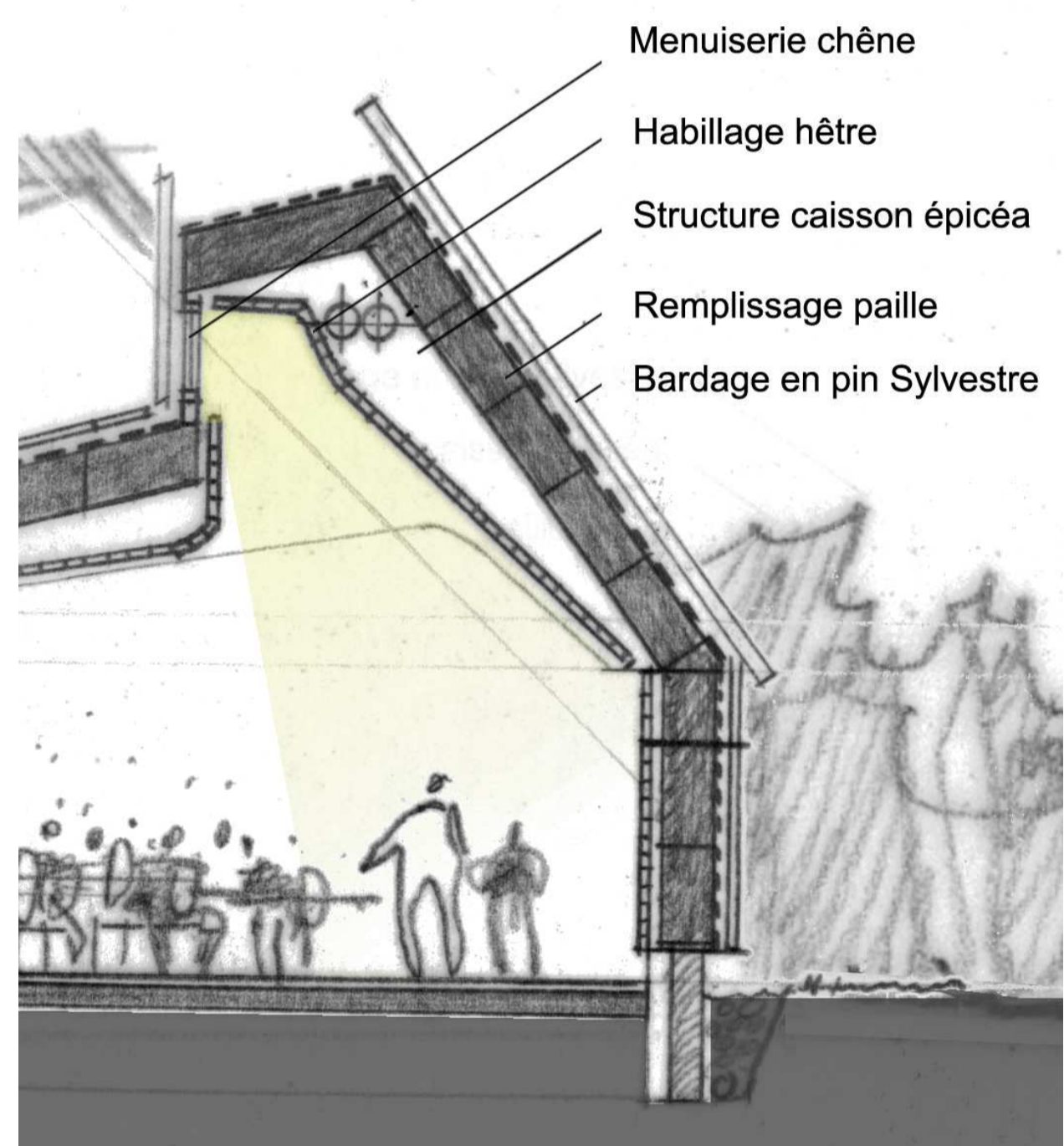
VUE SUR LA PLACE DE LA CARRIERE



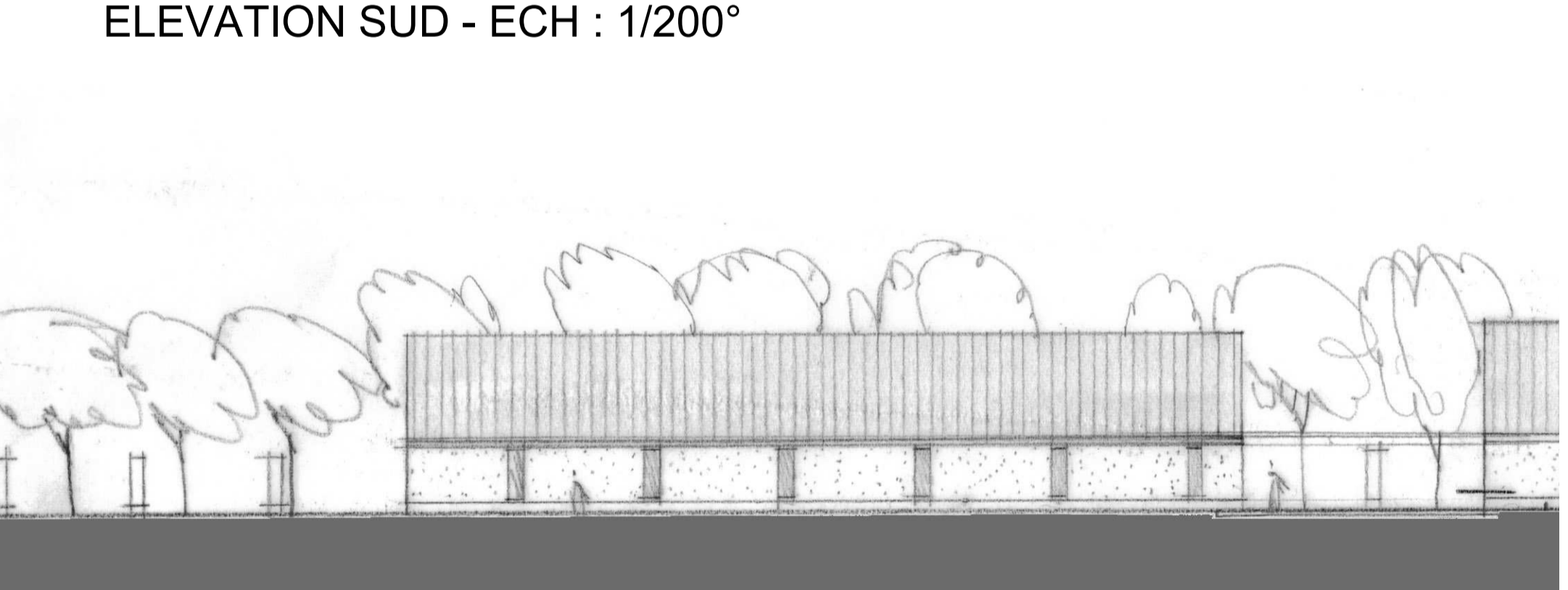
ELEVATION SUD - ECH : 1/200°



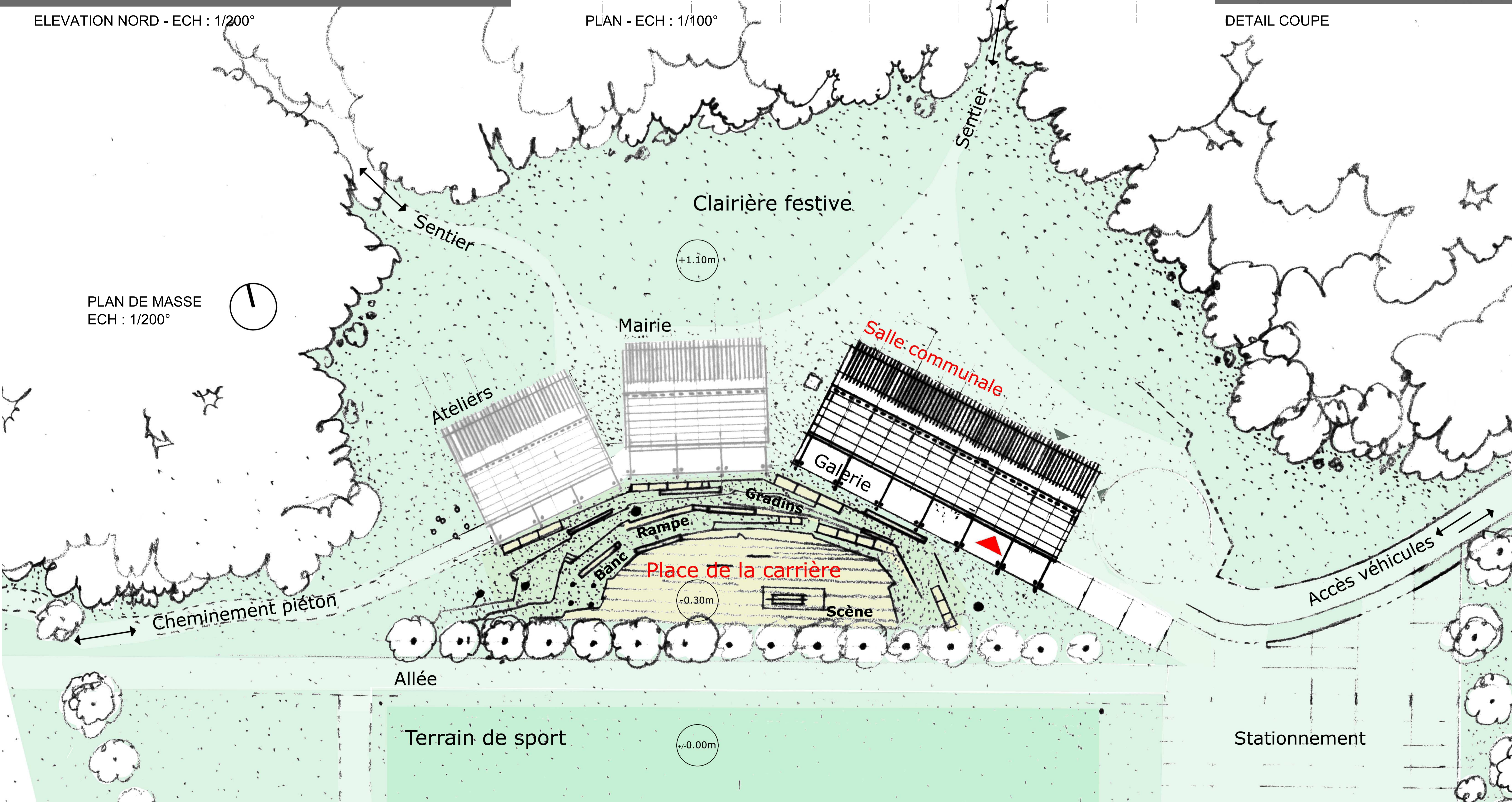
PLAN - ECH : 1/100°



DETAIL COUPE



ELEVATION NORD - ECH : 1/200°



- Menuiserie chêne
- Habillage hêtre
- Structure caisson épicea
- Remplissage paille
- Bardage en pin Sylvestre